

SLTT - 76 is Thermodynamic Steam Trap in stainless Steel construction (CF 8). It is suitable for tracer lines of low & medium pressure.



UNIQUE FEATURES

- Uniquely designed maintainable seat
- Corrosion resistant stainless still construction
- Differential hardness value for Seat & Disc
- Oxidation free heat treatment (vaccum) for Seat & Disc
- Functional test - 100% on steam

OPTIONAL EXTRAS

- Blow Down Valve -
To drain loose material particle collected in screen
- Insulation cover -
To isolate trap from ambient temperature variations

SIZE

15 NB, 20 NB, 25NB

PIPE CONNECTIONS

Screwed : BSP, BSPT, NPT

Socket Weld

Flanged : ASA 150, ASA 300, ASA 600
(Weld on)

DESIGN CONDITIONS

- Designed for # 600
- Max. allowable pressure (PMA) - 48.9 bar (g)
- Max. allowable temp (TMA) - 538°C
- Minimum inlet pressure required - 0.25 bar (g)
Back pressure should not exceed 80% of the inlet pressure

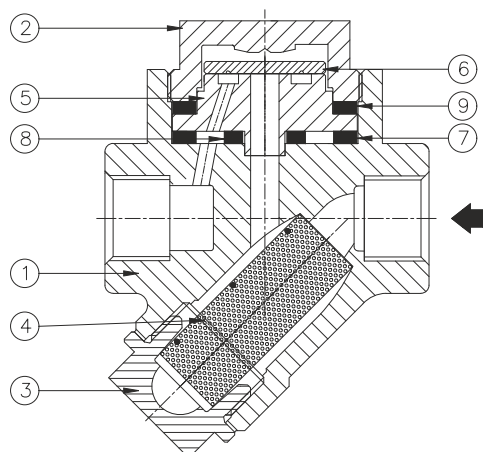
CERTIFICATION

IBR approval / En10204 - 3.1

INSTALLATION

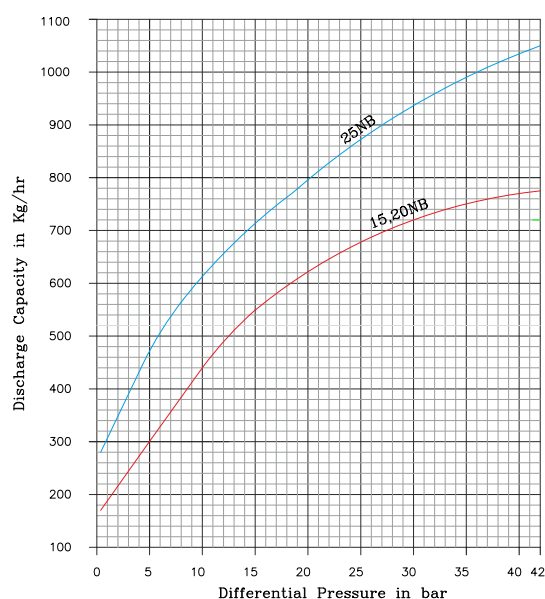
- SLTT - 76 can be installed both vertically as well as horizontally with the pipe line. Recommended is, trap installation in a horizontal pipe with disc cover at top.
- Flow direction arrow on the product should be examined carefully.
- Trap to be installed as close as possible to condensate collection point.
- Ensure proper flushing of line before installation.
- Condensate discharge should be properly routed to safe passage.

CONSTRUCTION



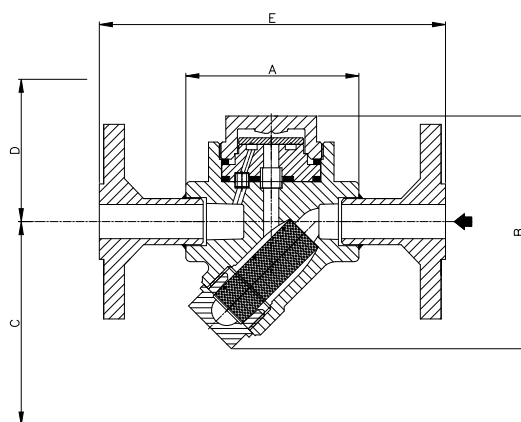
PART LIST

No.	Part Name	Material	Qty
1	Body	ASTM A 351 Gr. CF 8	1
2	Disc cover	ASTM A 351 Gr. CF 8	1
3	Strainer Cap	ASTM A 351 Gr. CF 8	1
4	Strainer Screen	AISI 304	1
5	Seat	AISI 420	1
6	Disc	AISI 420	1
7	Seat gasket lower - 1	Spiral wound graphite gasket with AISI 304	1
8	Seat gasket lower - 2	Spiral wound graphite gasket with AISI 304	1
9	Seat gasket upper	Spiral wound graphite gasket with AISI 304	1



DIMENSIONS

Screwed, Socket weld & Flanged connection



Screwed / Socket weld

SLTT - 76	A	B	C	D	Wt.
15,20 NB	80	108	100	90	1.8 kg
25 NB	96	126	115	110	2.6 kg

Flanged

Model	Class	Size	E	Wt. (Approx)
SLTT - 76	# 150	15 NB	160	3.2 kg
		20 NB	164	3.6 kg
		25 NB	186	4.0 kg
	# 300	15 NB	170	3.6 kg
		20 NB	174	4.1 kg
		25 NB	198	4.7 kg
	# 600	15 NB	182	4.8 kg
		20 NB	186	5.3 kg
		25 NB	212	5.9 kg

SPARE PARTS

- Seat & Disc Assembly (set P. No. 5,6,7,8,9)
- Screen (set of 5)
- Insulation cover (Set of 3)

Steamlok Engineering Pvt. Ltd.

W75 S Block MIDC Bhosari Pune, Maharashtra - 411026, India

Email : sales@steamlokengineering.com • Website : www.steamlokengineering.com

STEAM SOLUTION GROUP