

STEAMLOK RECENT SURVEYS & IMPLEMENTATIONS AT

CRODA



GLAND PHARMA LIMITED

Mylan

VINATI ORGANICS LIMITED



Gorakhpur Resources Limited

HSF FOOD PRO-TECH PVT. LTD.

Recron
Malaysia Sdn Bhd
Member Reliance Group

Apollo
HOSPITALS
TOUCHING LIVES



GANPATI AGRI
BUSINESS PVT. LTD.

ITC
ITC Limited



Steamlok

SteamLok Engineering Pvt. Ltd.

W75 S Block MIDC Bhosari Pune, Maharashtra - 411026, India

● Email : sales@steamlokengineering.com ● Website : www.steamlokengineering.com

STEAMLOK reserves the rights to alter, delete or make obsolete any product or specification featured on this catalog without prior notice and disclaims any all liability for such changes.



Steamlok

ISO 9001:2015
COMPANY

STEAMLOK ENGINEERING

WORLD'S 1ST
"ZERO LEAK BALL FLOAT STEAM TRAP"
SLFT75



www.steamlokengineering.com

World's First Zero Leak ball float steam trap - SLFT75

Brief

A ball float steam trap is a product used on steam process line to remove condensate formed during process. Condensate is nothing but hot water formed during heating process when steam loses its heat energy.

It is must to remove condensate as and when it form to maintain process temperature.

Function of a ball float steam trap is to trap (hold) steam & allow condensate to go out from trap.

Steamlok's **SLFT75** is an uniquely designed ball float trap with many novel features which helps to save energy & protect environment, gives better savings to customer in terms of product cost, space & long term maintenance cost with multiple functions in one products.

Novel Features :

1. Inbuilt maintainable strainer for online cleaning of strainer
2. Online Flushing Arrangement
3. Sight glass as standard feature to monitor trap operation (Visual control)
4. Rotary ball design for self seating arrangement of ball & seat with zero leakage
5. Replaceable seat plate design with reduced components, making trap robust & long lastig
6. Self aligning SLR (Steam lock release) design for taking care of cover & seat plate misalignment (avoiding steam loss)
7. SG Iron (ductile)construction for better strength & life of trap

Patent Reg. No. 201921034974
Float trap with self aligning
steamlock release (SLR)

Patent Reg. No. 201921034975
Float trap seat plate with
rotary ball float mechanism



STEAMLOK ENGINEERING PVT. LTD.



GAT NO: 200/2, MAHALUNGE, CHAKAN, PUNE – 410 502. MAHARASHTRA, INDIA.

Bureau Veritas Certification Holding SAS – UK Branch certifies that the Management System of the above organization has been audited and found to be in accordance with the requirements of the Management System standard detailed below.

Standard

ISO 9001:2015

Scope of certification

**DESIGN, MANUFACTURING, SALES & AFTER SALES SERVICE OF
STEAM ENGINEERING PRODUCTS.**

Original cycle start date: **03 September 2019**
Expiry date of previous cycle: **Not Applicable**
Certification Audit date: **20 August 2019**
Certification cycle start date: **03 September 2019**
Subject to the continued satisfactory operation of the organization's Management System, this certificate expires on: **02 September 2022**
Certificate No. **IND.19.12269U/Q** Version : 1 Revision date: **03 September 2019**

J. J. J.

Signed on behalf of BVCH SAS – UK Branch
Jagdeesh N. MANIAN
Head – CERTIFICATION, South Asia
Commodities, Industry & Facilities Division

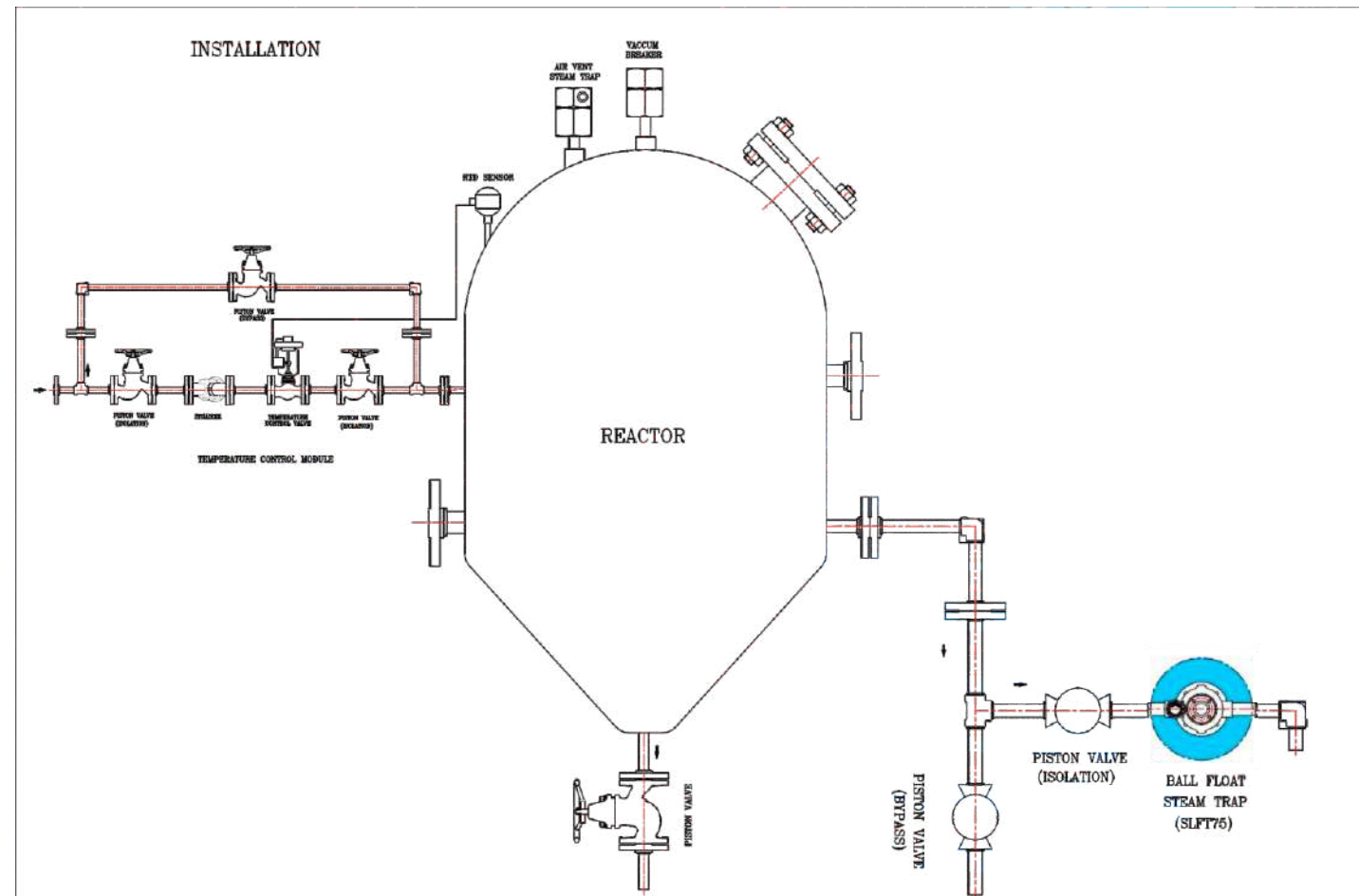
Certification body address: 5th Floor, 66 Prescott Street, London, E1 8HG, United Kingdom.

Local office: Bureau Veritas (India) Private Limited (Certification Business)
72 Business Park, Marol Industrial Area, MIDC Cross Road "C",
Andheri (East), Mumbai – 400 093, India.

Further clarifications regarding the scope of this certificate and the applicability of the management system requirements may be obtained by consulting the organization.
To check this certificate validity please call +91 22 6274 2000.



INSTALLATION



INSTALLATION GUIDELINES

- Trap must be installed in horizontal direction with arrow direction on nameplate pointing down
- Inlet direction arrow in pipe end must be fitted at inlet of trap.
- Slow opening of isolation valve is recommended to avoid system shock.
- Ensure proper flushing of line before installation of trap
- Periodic flushing through below down valve is recommended for smooth operation of trap.
- Blow down valve should be open at startup to avoid water hammering effect if the system was off for longer period of time

DESIGN DETAILS

SLFT-75 is an uniquely designed ball float steam trap in SG Iron construction with maintainable strainer, sight glass, unique valve seat & rotating ball design.



SIZE

15 NB, 20 NB, 25 NB

PIPE CONNECTIONS

Screwed : BSP, BSPT, NPT

DESIGN CONDITIONS

- Max. Allowable Pressure (PMA) - 16 Bar (g) @ 100° C
- Max. Allowable Temperature (TMA) 220° C
- Max. Operating Pressure (PMO) - 14 Bar
- Max. Operating Temperature (TMO) - 220° C
- Max. differential pressure - Δ PMX
SLFT 75 - 5 - 5 bar (g)
SLFT 75 - 10 - 10 bar (g)
SLFT 75 - 14 - 14 bar (g)

UNIQUE FEATURES

- Maintainable strainer design
- Sight glass as standard feature
- Unique valve & seat design with rotating ball
- Self aligning SLR design
- Functional test - 100% on steam

CERTIFICATION

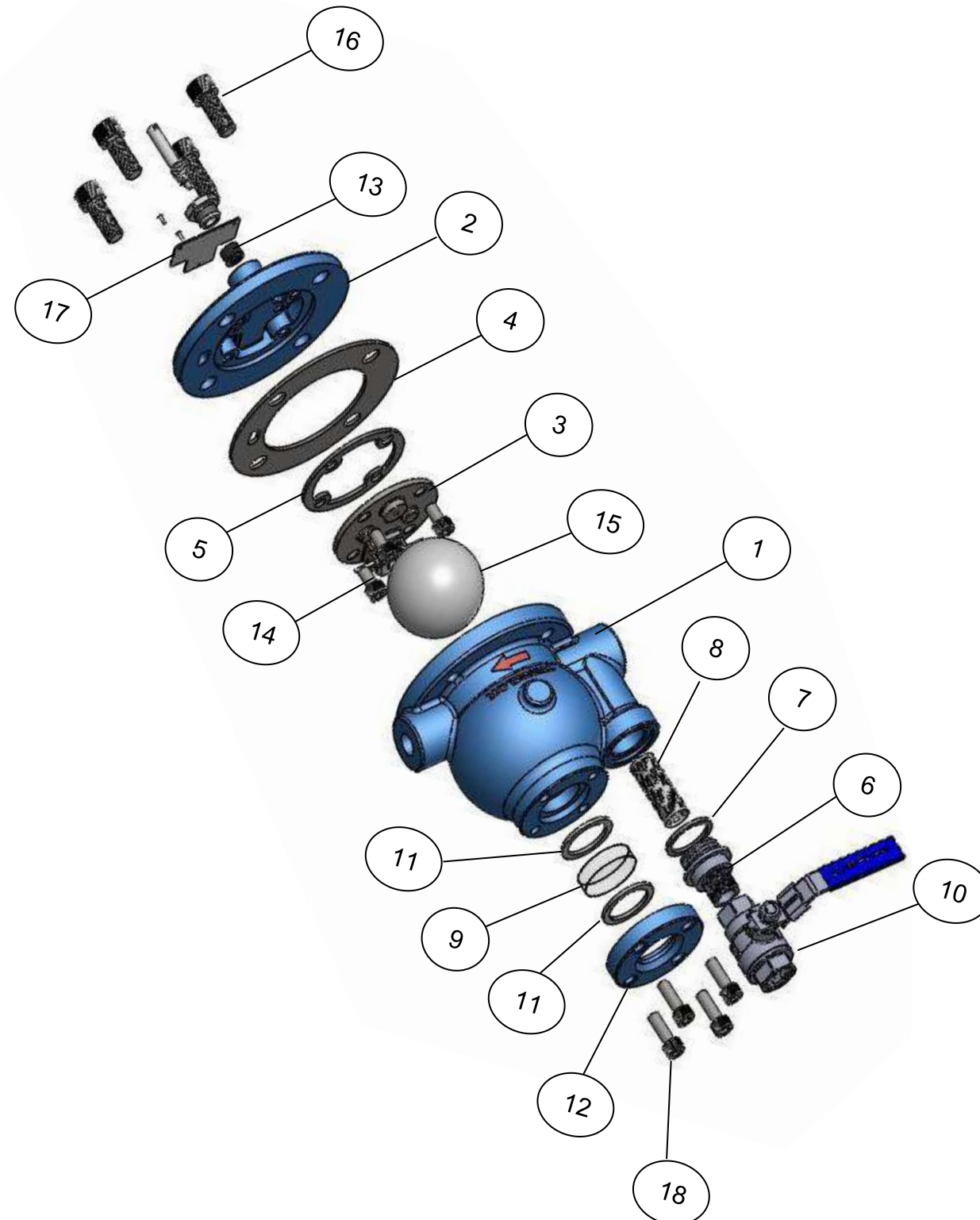
En 10204 - 3.1

DISCHARGE CAPACITY (Kg/hr)

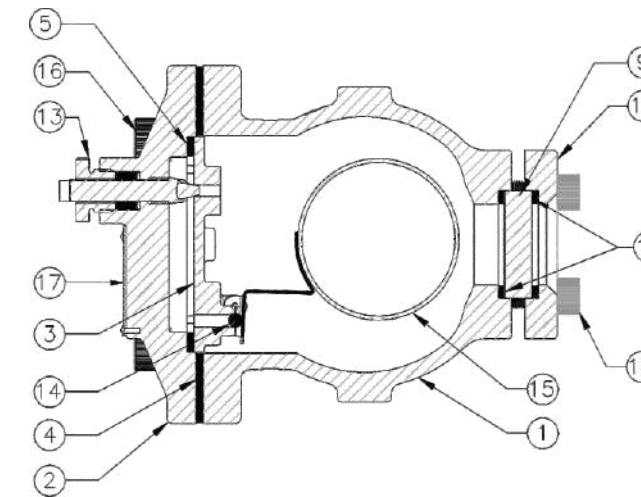
| MODEL | SIZE | DIFFERENTIAL PRESSURE(BAR) | | | | | | | | | | | | | |
|-----------|-----------|----------------------------|-----|------|------|------|------|------|------|------|------|-----|-----|-----|------|
| | | 0.5 | 1 | 1.5 | 2 | 2.5 | 3 | 3.5 | 4 | 4.5 | 5 | 5.5 | 6 | 6.5 | 7 |
| SLFT75-5 | 15NB,20NB | 240 | 336 | 418 | 487 | 546 | 600 | 647 | 696 | 740 | 781 | - | - | - | - |
| SLFT75-10 | 15NB,20NB | 130 | 182 | 227 | 264 | 296 | 325 | 351 | 378 | 401 | 424 | 445 | 466 | 486 | 505 |
| SLFT75-14 | 15NB,20NB | 54 | 75 | 94 | 109 | 122 | 134 | 145 | 156 | 166 | 175 | 184 | 192 | 200 | 208 |
| SLFT75-5 | 25NB | 598 | 837 | 1042 | 1213 | 1360 | 1495 | 1612 | 1735 | 1842 | 1947 | - | - | - | - |
| SLFT75-10 | 25NB | 266 | 372 | 463 | 539 | 605 | 664 | 716 | 770 | 819 | 865 | 909 | 952 | 992 | 1031 |
| SLFT75-14 | 25NB | 130 | 182 | 227 | 264 | 296 | 325 | 351 | 378 | 401 | 424 | 446 | 466 | 486 | 505 |

| MODEL | SIZE | DIFFERENTIAL PRESSURE(BAR) | | | | | | | | | | | | | |
|-----------|-----------|----------------------------|------|------|------|------|------|------|-----|------|-----|------|-----|------|-----|
| | | 7.5 | 8 | 8.5 | 9 | 9.5 | 10 | 10.5 | 11 | 11.5 | 12 | 12.5 | 13 | 13.5 | 14 |
| SLFT75-5 | 15NB,20NB | - | - | - | - | - | - | - | - | - | - | - | - | - | - |
| SLFT75-10 | 15NB,20NB | 524 | 541 | 560 | 576 | 592 | 609 | - | - | - | - | - | - | - | - |
| SLFT75-14 | 15NB,20NB | 216 | 224 | 231 | 238 | 245 | 251 | 258 | 265 | 271 | 278 | 284 | 290 | 297 | 302 |
| SLFT75-5 | 25NB | - | - | - | - | - | - | - | - | - | - | - | - | - | - |
| SLFT75-10 | 25NB | 1069 | 1105 | 1141 | 1176 | 1209 | 1243 | - | - | - | - | - | - | - | - |
| SLFT75-14 | 25NB | 524 | 542 | 560 | 576 | 593 | 609 | 625 | 641 | 657 | 673 | 688 | 703 | 718 | 733 |

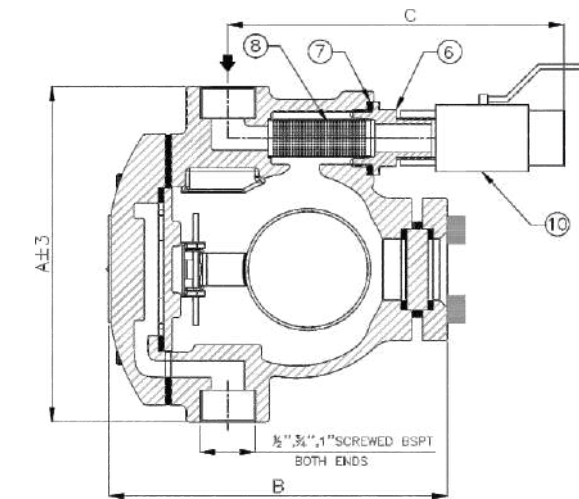
EXPLODED VIEW



CONSTRUCTION



DIMENSIONS



PART LIST

| NO | DESCRIPTION | MATERIAL | QTY |
|----|-----------------------------|------------------------------|-----|
| 1 | BODY | IS 1865 SG 500/7 | 1 |
| 2 | COVER | | 1 |
| 3 | COVER MOUNTING PLATE | ASTM A351 GR.CF8 | 1 |
| 4 | COVER GASKET | GRAPHITE WITH AISI 304 | 1 |
| 5 | COVER MOUNTING PLATE GASKET | GRAPHITE WITH AISI 304 | 1 |
| 6 | BLOW DOWN CONNECTOR | ASTM A216 GR.WCB | 1 |
| 7 | STRAINER CAP GASKET | GRAPHITE WITH AISI 304 | 1 |
| 8 | STRAINER SCREEN | AISI 304 (0.8 PERF.) | 1 |
| 9 | SIGHT GLASS | TOUGHENED BOROSILICATE GLASS | 1 |
| 10 | BALL VALVE | ASTM A351 GR.CF8 | 1 |
| 11 | SIGHT GLASS GASKET | GRAPHITE WITH AISI 304 | 2 |
| 12 | SIGHT GLASS COVER | ASTM A516 GR.70 | 1 |
| 13 | SLR UNIT | AISI 304 | 1 |
| 14 | BALL | AISI 440C | 1 |
| 15 | FLOAT ASSEMBLY | AISI 304 | 1 |
| 16 | ALLEN BOLT | ASTM A193 GR.B7 | 4 |
| 17 | NAME PLATE | AISI 304 | 1 |
| 18 | SIGHT GLASS COVER BOLT | ASTM A193 GR.B7 | 4 |

Screwed

| MODEL | SIZE | A | B | C | WT.(APPROX.) |
|---------|---------|-----|-----|-----|--------------|
| SLFT-75 | 15,20NB | 165 | 161 | 144 | 5.8 KG |
| | 25NB | 175 | 176 | 148 | 6.5 KG |

SPARE PARTS

- Float Assembly (5 bar, 10 bar, 14 bar)
- Strainer screen (set of 5)
- Cover gasket (set of 5)
- Air Vent assembly / SLR Unit

CERTIFICATION

- En 10204-3-1

HOW TO ORDER

Ex. SLFT-75, Ball Float Steam Trap in SG Iron,
15NB, Screwed BSPT, 5 bar (g), SLR, Non IBR.