

SLSEP-25 is a baffle type moisture separator in cast steel (WCB) construction.



SIZE

25 NB, 40 NB, 50 NB, 65 NB, 80 NB, 100 NB,
125 NB, 150 NB, 200 NB

PIPE CONNECTIONS

Flanged :

ASA150

ASA300

DESIGN CONDITIONS

Material Grade	End Connection	Max. Allowable Pressure (PMA) bar (g)	Max. Allowable Temperature degree centigrade
Cast Steel	#150	19.6	-29 to 38
		5.5	425
	#300	51.1	-29 to 38
		28.8	425

UNIQUE FEATURES

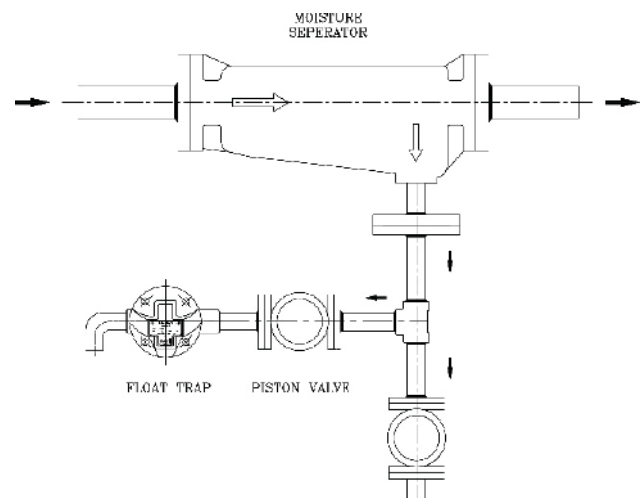
- Baffle type construction for enhanced condensate removal efficiency
- Suitable for both steam as well as compressed air

INSTALLATION

- Moisture separator has to be installed in horizontal direction as per arrow direction on body
- Condensate drain hole has to be at bottom side (Pointing towards ground)
Suitable trap or trap module need to install at condensate drain pipe to remove condensate

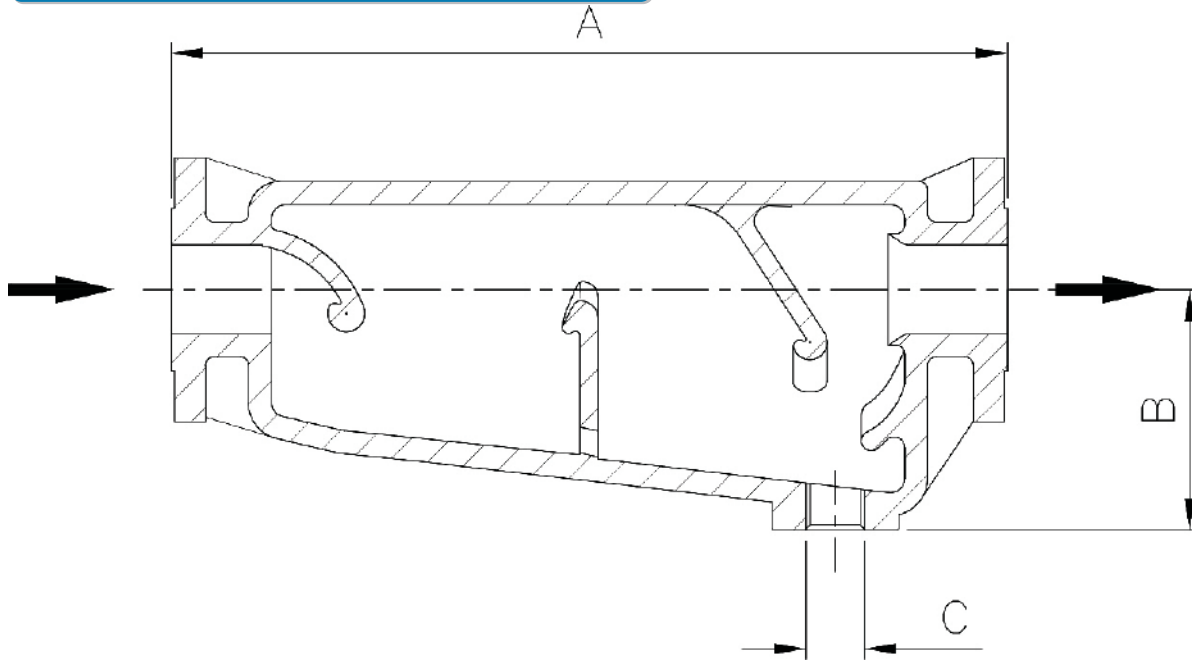
CERTIFICATION

IBR approval / En10204 3.1



Moisture Separator with float trap drain module

DIMENSIONS



DIMENSIONS

SR.NO.	SIZE	A		B	C (BSPT)
		#150	#300		
1	25NB	305	311	95	3/4"
2	40NB	376	383	110	3/4"
3	50NB	456	462	150	1"
4	65NB	464	470	180	1"
5	80NB	494	512	185	1"
6	100NB	696	712	234	1"
7	125NB	702	724	236	1"
8	150NB	702	724	245	1"
9	200NB	768	794	307	1"

HOW TO ORDER

Ex. SLSEP-25, Cast Steel, Moisture Separator, 50NB, ASA150, Non - IBR / IBR

SteamLok Engineering Pvt. Ltd.

W75 S Block MIDC Bhosari Pune, Maharashtra - 411026, India

Email : sales@steamlokengineering.com • Website : www.steamlokengineering.com

STEAM SOLUTION GROUP