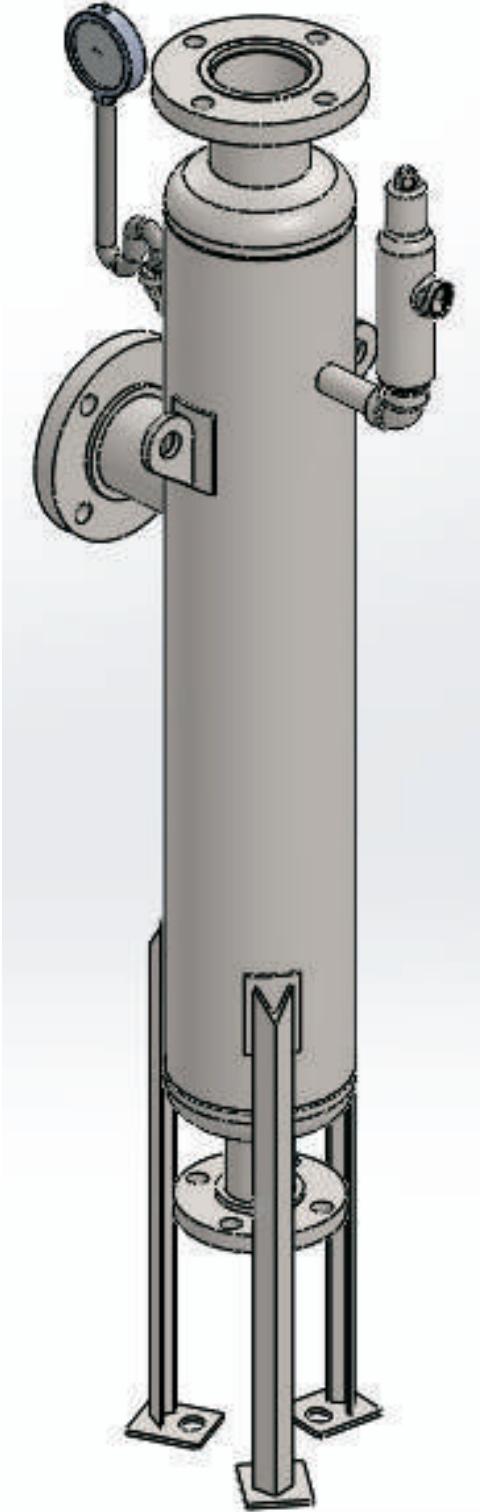


SLFV-96 is an excellent designed flash vessel in carbon steel construction.



## SIZE

150NB, 200NB, 300NB,  
400NB, 450NB, 500NB

## DESIGN CONDITIONS

- Max. Allowable Pressure  
(PMA) - 20 Kg/cm<sup>2</sup> (g) @ room temperature
- Max. Allowable Temp  
(TMA) - 425 °C
- Max. Operating Pressure  
(PMO) - 14 Kg/cm<sup>2</sup> (g) @ 200 °C

## CERTIFICATION

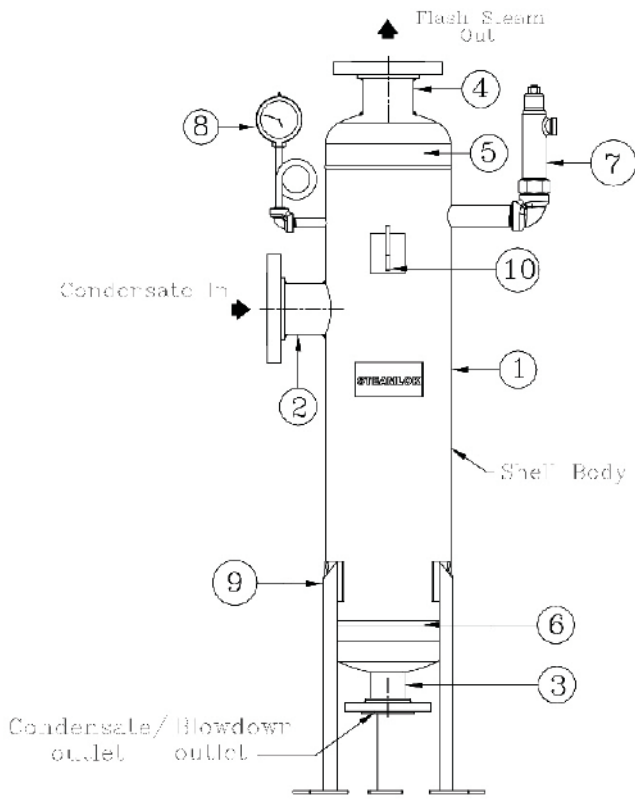
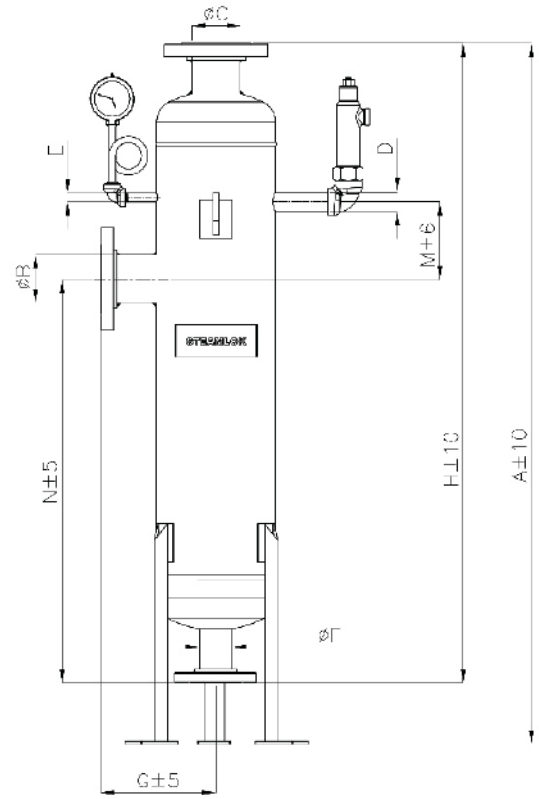
- IBR / Non IBR
- En 10204 - 3.1

## UNIQUE FEATURES

- Lifting lug as a standard feature for ease of installation.
- Designed as per standard section VIII.

## INSTALLATION

- Install pressure gauge, safety valve, strainer, float trap, piston valve in loose condition with vessel as per construction view shown in the product catalogue.

**CONSTRUCTION**

**DIMENSIONAL VIEW**

**PART LIST**

ITEM NO.	DESCRIPTION	MATERIAL	QTY
1	STEEL SHELL	SA 516 GR 70	1
2	CONDENSATE INLET	SA 516 GR 70	1
3	CONDENSATE/ BLOWDOWN OUTLET	SA 516 GR 70	1
4	TOP END FLANGE	SA 516 GR 70	1
5	CONDENSATE INLET FLANGE	SA 516 GR 70	1
6	CONDENSATE/ BLOWDOWN OUTLET FLANGE	SA 516 GR 70	1
7	STEEL WELD	MS	1
8	CONDENSATE INLET GASKET	MS	1
9	CONDENSATE/ BLOWDOWN OUTLET GASKET	MS	1
10	TOP END GASKET	MS	1

**DIMENSIONS TABLE**

DIMENSION TABLE :

SIZE NB	A	$\phi B$	$\phi C$	D	E	$\phi F$	G	H	M	N	*X
150	1350	80NB	80NB	25NB	15NB	50NB	187	1165	195	720	231
200	1350	80NB	80NB	25NB	15NB	50NB	212	1200	195	750	285
300	1490	100NB	100NB	40NB	15NB	50NB	310	1270	195	750	395
400	1600	100NB	100NB	50NB	15NB	50NB	325	1342	195	750	485
450	1850	150NB	150NB	50NB	15NB	50NB	390	1506	220	770	553
500	2100	200NB	200NB	50NB	15NB	50NB	442	1802	370	856	614

NOTES : -

- \* 1) OD OF LIFTING LUG HOLE IS APPROX. 'X' MM
- 2) ALL DIMENSIONS ARE IN MM.

**HOW TO ORDER**

Ex. SLFV-96, Carbon steel flash vessel, 150NB, flanged connection, Non IBR.

**SteamLok Engineering Pvt. Ltd.**

W75 S Block MIDC Bhosari Pune, Maharashtra - 411026, India

Email : sales@steamlokengineering.com • Website : www.steamlokengineering.com

**STEAM SOLUTION GROUP**