

STEAMLOK RECENT SURVEYS & IMPLEMENTATIONS AT .....

**CRODA**



GLAND PHARMA LIMITED

**Mylan**

**VINATI ORGANICS LIMITED**



Gorakhpur Resources Limited

**HSF FOOD PRO-TECH PVT. LTD.**

**Recron**  
Malaysia Sdn Bhd  
Member Reliance Group

**Apollo**  
HOSPITALS  
TOUCHING LIVES

**ITC**  
ITC Limited

**GANPATI AGRI**  
BUSINESS PVT. LTD.

**JKTYRE**  
TOTAL CONTROL



**Steamlok**

**SteamLok Engineering Pvt. Ltd.**

W75 S Block MIDC Bhosari Pune, Maharashtra - 411026, India

● Email : [sales@steamlokengineering.com](mailto:sales@steamlokengineering.com) ● Website : [www.steamlokengineering.com](http://www.steamlokengineering.com)

STEAMLOK reserves the rights to alter, delete or make obsolete any product or specification featured on this catalog without prior notice and disclaims any all liability for such changes.



**Steamlok**

ISO 9001:2015  
COMPANY

## STEAMLOK ENGINEERING

**WORLD'S 1ST**  
**"ZERO LEAK BALL FLOAT STEAM TRAP"**  
**SLFT75**



[www.steamlokengineering.com](http://www.steamlokengineering.com)

## World's First Zero Leak ball float steam trap - SLFT75

### Brief

A ball float steam trap is a product used on steam process line to remove condensate formed during process. Condensate is nothing but hot water formed during heating process when steam loses its heat energy.

It is must to remove condensate as and when it form to maintain process temperature.

Function of a ball float steam trap is to trap ( hold) steam & allow condensate to go out from trap.

Steamlok's **SLFT75** is an uniquely designed ball float trap with many novel features which helps to save energy & protect environment, gives better savings to customer in terms of product cost, space & long term maintenance cost with multiple functions in one products.

#### Novel Features :

1. Inbuilt maintainable strainer for online cleaning of strainer
2. Online Flushing Arrangement
3. Sight glass as standard feature to monitor trap operation (Visual control)
4. Rotary ball design for self seating arrangement of ball & seat with zero leakage
5. Replaceable seat plate design with reduced components, making trap robust & long lastig
6. Self aligning SLR (Steam lock release) design for taking care of cover & seat plate misalignment ( avoiding steam loss )
7. SG Iron ( ductile)construction for better strength & life of trap

Patent Reg. No. 201921034974  
Float trap with self aligning  
steamlock release (SLR)

Patent Reg. No. 201921034975  
Float trap seat plate with  
rotary ball float mechanism



### STEAMLOK ENGINEERING PVT. LTD.



GAT NO: 200/2, MAHALUNGE, CHAKAN, PUNE – 410 502. MAHARASHTRA, INDIA.

*Bureau Veritas Certification Holding SAS – UK Branch certifies that the Management System of the above organization has been audited and found to be in accordance with the requirements of the Management System standard detailed below.*

*Standard*

### ISO 9001:2015

*Scope of certification*

**DESIGN, MANUFACTURING, SALES & AFTER SALES SERVICE OF  
STEAM ENGINEERING PRODUCTS.**

Original cycle start date: **03 September 2019**  
Expiry date of previous cycle: **Not Applicable**  
Certification Audit date: **20 August 2019**  
Certification cycle start date: **03 September 2019**  
Subject to the continued satisfactory operation of the organization's Management System, this certificate expires on: **02 September 2022**  
Certificate No. **IND.19.12269U/Q** Version : 1 Revision date: **03 September 2019**

*J. Jagdheesh N. Manian*

**Signed on behalf of BVCH SAS – UK Branch**  
**Jagdheesh N. MANIAN**  
**Head – CERTIFICATION, South Asia**  
**Commodities, Industry & Facilities Division**

Certification body address: **5th Floor, 66 Prescott Street, London, E1 8HG, United Kingdom.**

Local office: **Bureau Veritas (India) Private Limited (Certification Business)**  
**72 Business Park, Marol Industrial Area, MIDC Cross Road "C",**  
**Andheri (East), Mumbai – 400 093, India.**

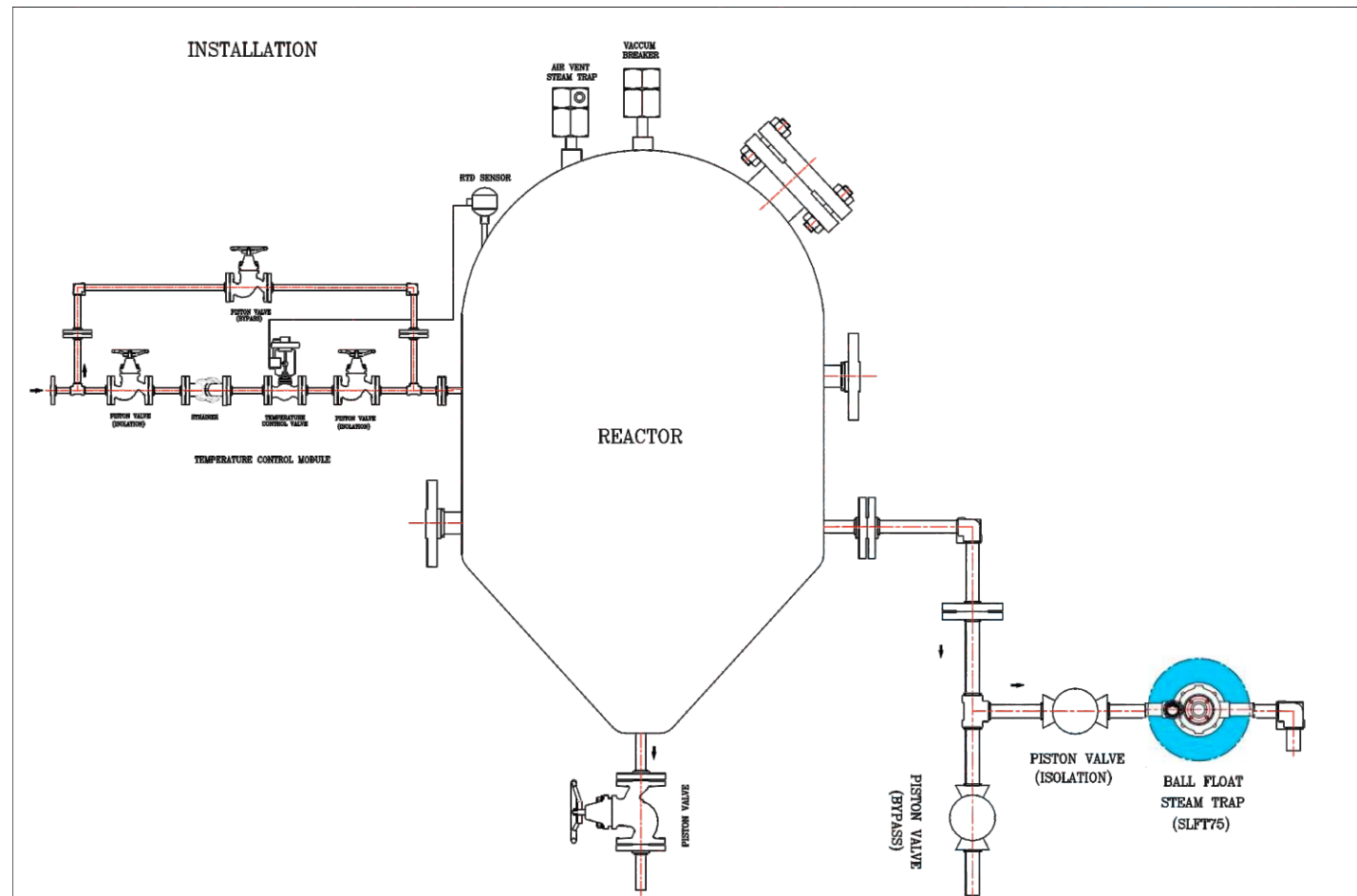
Further clarifications regarding the scope of this certificate and the applicability of the management system requirements may be obtained by consulting the organization. To check this certificate validity please call +91 22 6274 2000.





## INSTALLATION

## DESIGN DETAILS



SLFT-75 is an uniquely designed ball float steam trap in SG Iron construction with maintainable strainer, sight glass, unique valve seat & rotating ball design.

### SIZE

15 NB, 20 NB, 25 NB

### PIPE CONNECTIONS

**Screwed :** BSP, BSPT, NPT

### DESIGN CONDITIONS

- Max. Allowable Pressure (PMA) - 16 Bar (g) @ 100° C
- Max. Allowable Temperature (TMA) 220° C
- Max. Operating Pressure (PMO) - 14 Bar
- Max. Operating Temperature (TMO) - 220° C
- Max. differential pressure -  $\Delta$  PMX  
SLFT 75 - 5 - 5 bar (g)  
SLFT 75 - 10 - 10 bar (g)  
SLFT 75 - 14 - 14 bar (g)

### UNIQUE FEATURES

- Maintainable strainer design
- Sight glass as standard feature
- Unique valve & seat design with rotating ball
- Self aligning SLR design
- Functional test - 100% on steam

### CERTIFICATION

En 10204 - 3.1

### INSTALLATION GUIDELINES

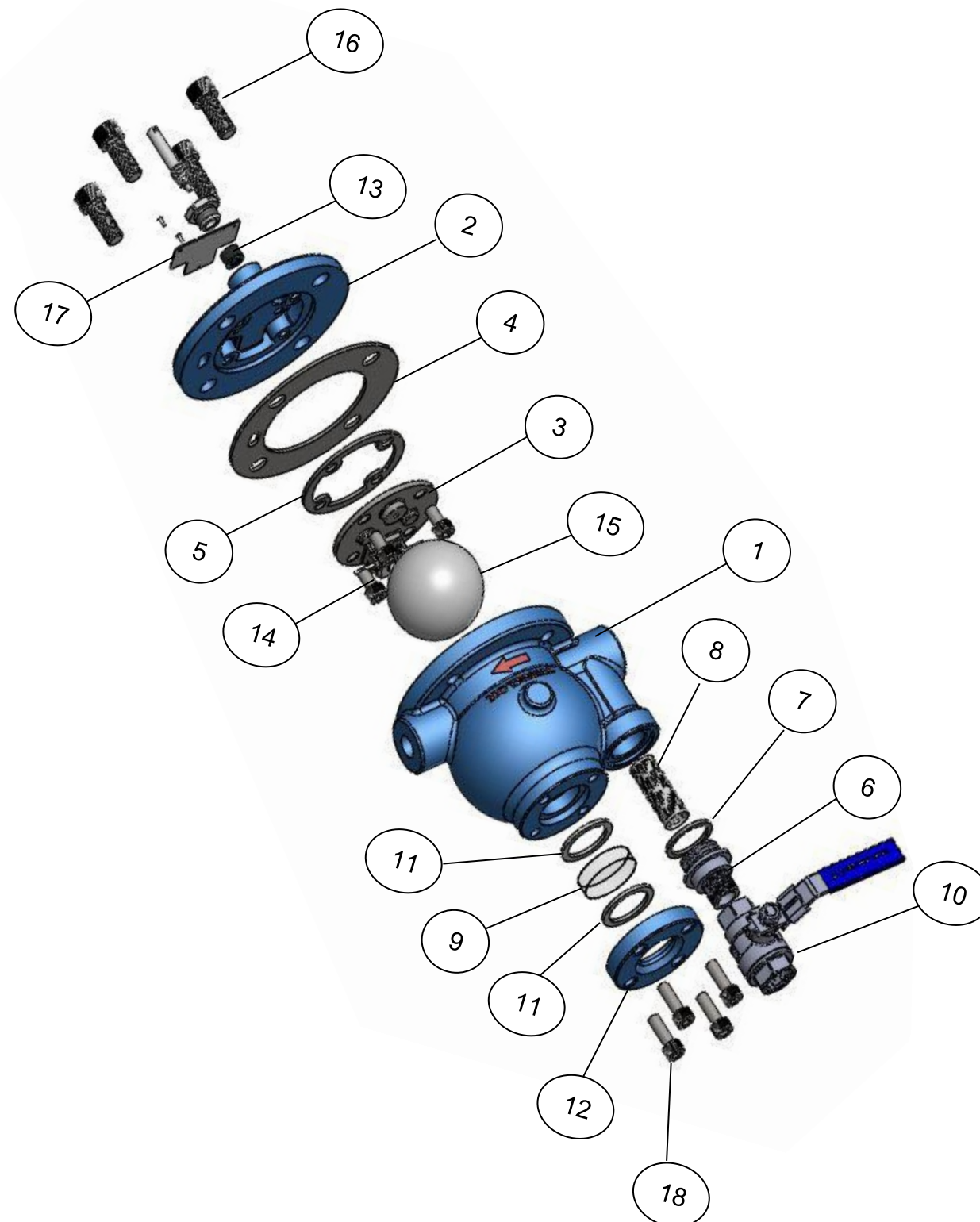
- Trap must be installed in horizontal direction with arrow direction on nameplate pointing down
- Inlet direction arrow in pipe end must be fitted at inlet of trap.
- Slow opening of isolation valve is recommended to avoid system shock.
- Ensure proper flushing of line before installation of trap
- Periodic flushing through below down valve is recommended for smooth operation of trap.
- Blow down valve should be open at startup to avoid water hammering effect if the system was off for longer period of time

### DISCHARGE CAPACITY (Kg/hr)

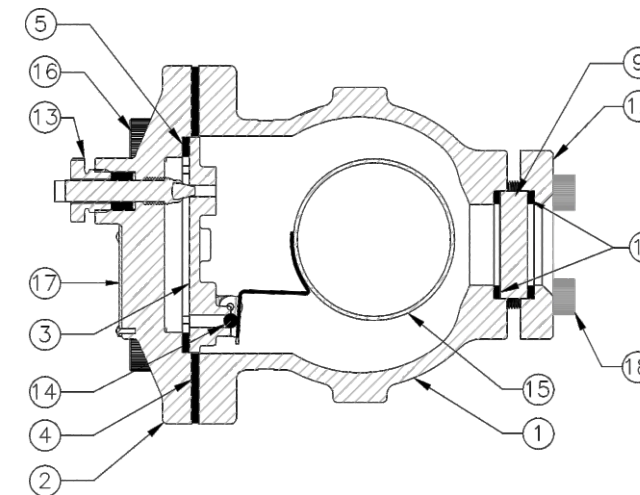
MODEL	SIZE	DIFFERENTIAL PRESSURE(BAR)													
		0.5	1	1.5	2	2.5	3	3.5	4	4.5	5	5.5	6	6.5	7
SLFT75-5	15NB,20NB	240	336	418	487	546	600	647	696	740	781	-	-	-	-
SLFT75-10	15NB,20NB	130	182	227	264	296	325	351	378	401	424	445	466	486	505
SLFT75-14	15NB,20NB	54	75	94	109	122	134	145	156	166	175	184	192	200	208
SLFT75-5	25NB	598	837	1042	1213	1360	1495	1612	1735	1842	1947	-	-	-	-
SLFT75-10	25NB	266	372	463	539	605	664	716	770	819	865	909	952	992	1031
SLFT75-14	25NB	130	182	227	264	296	325	351	378	401	424	446	466	486	505

MODEL	SIZE	DIFFERENTIAL PRESSURE(BAR)													
		7.5	8	8.5	9	9.5	10	10.5	11	11.5	12	12.5	13	13.5	14
SLFT75-5	15NB,20NB	-	-	-	-	-	-	-	-	-	-	-	-	-	-
SLFT75-10	15NB,20NB	524	541	560	576	592	609	-	-	-	-	-	-	-	-
SLFT75-14	15NB,20NB	216	224	231	238	245	251	258	265	271	278	284	290	297	302
SLFT75-5	25NB	-	-	-	-	-	-	-	-	-	-	-	-	-	-
SLFT75-10	25NB	1069	1105	1141	1176	1209	1243	-	-	-	-	-	-	-	-
SLFT75-14	25NB	524	542	560	576	593	609	625	641	657	673	688	703	718	733

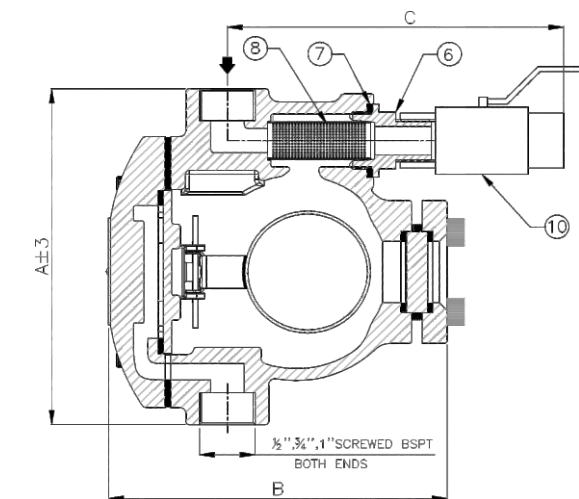
## EXPLODED VIEW



## CONSTRUCTION



## DIMENSIONS



## PART LIST

NO	DESCRIPTION	MATERIAL	QTY
1	BODY	IS 1865 SG 500/7	1
2	COVER		1
3	COVER MOUNTING PLATE	ASTM A351 GR.CF8	1
4	COVER GASKET	GRAPHITE WITH AISI 304	1
5	COVER MOUNTING PLATE GASKET	GRAPHITE WITH AISI 304	1
6	BLOW DOWN CONNECTOR	ASTM A216 GR.WCB	1
7	STRAINER CAP GASKET	GRAPHITE WITH AISI 304	1
8	STRAINER SCREEN	AISI 304 (0.8 PERF.)	1
9	SIGHT GLASS	TOUGHENED BOROSILICATE GLASS	1
10	BALL VALVE	ASTM A351 GR.CF8	1
11	SIGHT GLASS GASKET	GRAPHITE WITH AISI 304	2
12	SIGHT GLASS COVER	ASTM A516 GR.70	1
13	SLR UNIT	AISI 304	1
14	BALL	AISI 440C	1
15	FLOAT ASSEMBLY	AISI 304	1
16	ALLEN BOLT	ASTM A193 GR.B7	4
17	NAME PLATE	AISI 304	1
18	SIGHT GLASS COVER BOLT	ASTM A193 GR.B7	4

## Screwed

MODEL	SIZE	A	B	C	WT.(APPROX.)
SLFT-75	15,20NB	165	161	144	5.8 KG
	25NB	175	176	148	6.5 KG

## SPARE PARTS

- Float Assembly (5 bar, 10 bar, 14 bar)
- Strainer screen (set of 5)
- Cover gasket ( set of 5)
- Air Vent assembly / SLR Unit

## CERTIFICATION

- En 10204-3-1

## HOW TO ORDER

Ex. SLFT-75, Ball Float Steam Trap in SG Iron,  
15NB, Screwed BSPT, 5 bar (g), SLR, Non IBR.